

2021 BUZZARDS BAY BLAST

NOTICE OF RACE & SAILING INSTRUCTIONS

JUNE 19, 2021

1. RULES

1.1 The race shall be governed by the Racing Rules of Sailing and the NEMA Race Rules.

1.2 All entrants will be required to carry safety equipment as described in the NEMA Race Rules.

1.5 A minimum of three entries is required to run the event.

2.0 ELIGIBILITY

2.1 The race is open to all multihulls with a 2021 NEMA rating certificate of 105 or less.

3.0 ENTRY

3.1 Eligible boats may enter by contacting registering on the NEMA Events website or by directly contacting Mark Bussard at mark.bussard@comcast.net. They must supply their NEMA Rating at the time of entry. There is no entry fee.

3.2 Race Q's App. Participation is highly recommended so the event can be also confirmed should there be any post-race discrepancies on times reported and taken by all boats. [Download](#) the app and start it at 10:50 during check-in. Only one phone per boat should run the app.

<https://raceqs.com/>

4.0 SCHEDULE

4.1 Official Race Start will be at 11:10 AM, June 19.

4.2 Pre-start announcements will commence on **channel 72** at 10:50 & 10:55

- 10:50 the course selected will be announced and boats should then check in also on channel 72.
- 10:55 the official first warning will be confirmed to occur as scheduled at 11:00am as the 10 minute warning or a new time will be announced as a postponement.
- All boats should use GPS time for all above times mentioned including the expected start time of 11:10 if no postponement was announced.

5.0 RACING AREA & COURSES

5.1 The start will be off Bird I. south of Sippican harbor and will use government marks as described in the sailing instructions course sheet attached.

5.2 Course options include 4 possible choices as follows ranging from 19nm long course to 10nm short course. Course descriptions below can also be found on the course sheet attached.

Course #1 S/F **1** , Nye Ledge **4P**, Cleveland **2P**, Bird G3 **1P** , Nyle Ledge **4P** , S/F **1** *Notes: Basic Triangle Windward Leeward course, finish down wind. (Approx. 18 NM)*

Course #2 S/F **1** , Nye Ledge **4P**, Cleveland **2P**, Nye Ledge **4S** , S/F **1** *Notes: Return to Nye Ledge after Cleveland and leave to Starboard (Approx. 15.1 NM)*

Course #3 S/F **1** , Sippican (CB Shoal) **6P**, Woods Hole **3S**, Mattapoisett **5S** , S/F **1** *Notes: Long Course (Approx.19nm)*

Course #4 S/F **1** , Cleveland **2S**, Nye Ledge **4S** , S/F **1** *Notes: Short Course (Approx.10nm) clockwise triangle*

6.0 PRIZES

6.1 There will be no awards for this event.

7.0 SCORING

7.1 Results will be Time on Time using 2021 NEMA ratings as published.

8.0 DISCLAIMER OF LIABILITY

8.1 Competitors participate in the regatta entirely at their own risk. See RRS 4, Decision to Race. The organizing authority will not accept liability for material damage or personal injury or death sustained in conjunction with or prior to, during, or after the race.

9.0 INSURANCE

9.1 Each participating boat shall be insured with valid third-party liability insurance with a minimum of \$80,000 per incident.

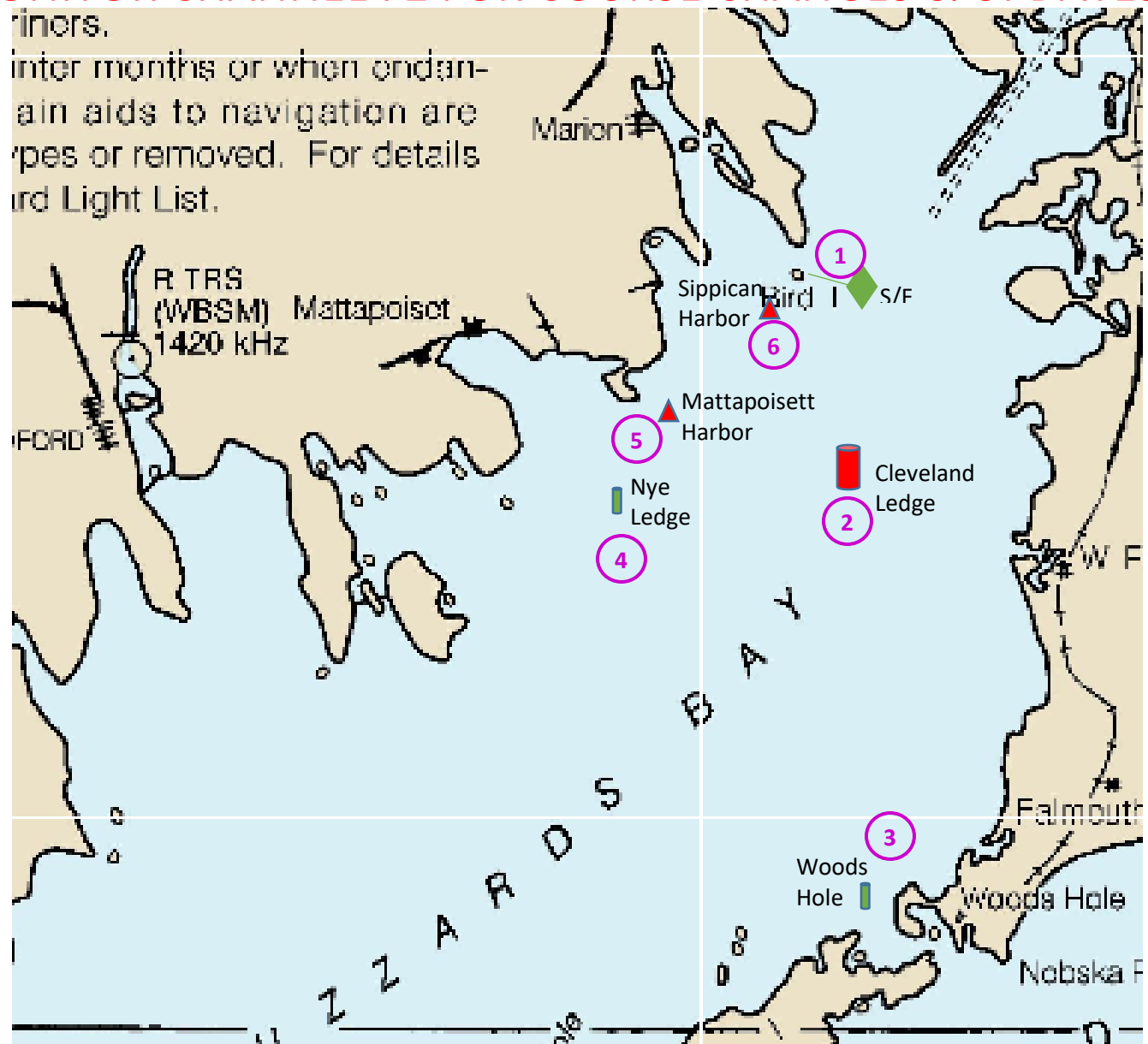
10.0 CONTACT INFORMATION

10.1 For further information contact Mark Bussard at mark.bussard@comcast.net.

11.0 COURSE SHEET & INSTRUCTIONS

11.1 All boats are required to use GPS time for the start and for finish times. After passing the finish line you must take your finish time using GPS time and remain in the area to record the finish time & name or sail number of the boat after you. When you have both times available you may report your finish time and the boats after yours finish time to the RC. Note: If the RC boat is still actively racing please allow them to finish before reporting times or after all boats have finished.

MONITOR CHANNEL 72 FOR COURSE CHANGES & UPDATES



Mark Definitions – Clockwise Around The Charted Marks

S/F = Start Finish Line Between the Light Tower on Bird Island & the

[1] Bird Island Bell Green Buoy #3

41° 39.995'N 70° 42.391'W

[2] Cleveland Ledge Tower Light – Cleveland East Ledge Light

41° 37.867'N 70° 41.651'W

[3] Wood Hole Passage Lighted Green Bell Buoy #13

41° 31.686'N 70° 41.817'W

[4] Nye Ledge Lighted Bell Buoy 1

41° 37.054'N 70° 46.180'W

[5] Mattapoissett Harbor Approach Red Buoy #2 (Angelica Pt.)

41° 38.405'N 70° 45.740'W

[6] Sippican Harbor Lighted Red Buoy #2 (Centerboard Shoal)

41° 39.818'N 70° 43.508'W

Buzzards Bay Blast Courses

Start / Finish Line

Between Bird G3 - Bird Light

Course #1 (Approx. 18 NM)

S/F 1 , Nye Ledge 4P, Cleveland 2P, Bird G3 1P , Nye Ledge 4P , S/F 1

Notes: Basic Triangle Windward Leeward course, finish down wind.

Course #2 (Approx. 15.1 NM)

S/F 1 , Nye Ledge 4P, Cleveland 2P, Nye Ledge 4S , S/F 1

Notes: Return to Nye Ledge after Cleveland and leave to Starboard

Course #3 (Approx.19nm)

S/F 1 , Sippican (CB Shoal) 6P, Woods Hole 3S, Mattapoisett 5S , S/F 1

Notes: Long Course

Course #4 (Approx.10nm)

S/F 1 , Cleveland 2S, Nye Ledge 4S , S/F 1

Notes: Short Course (approx.10nm) clockwise triangle

General Notes:

All course are downwind finish (or opposite the direction of starting)

After finishing, take your time, remain in the S/F area and take the finishing time, name or sail number of the boat after you.

GPS Start Time: 10 min. warning at 11:00AM, Start Gun 11:10 GPS Time.

Monitor Channel 72 for course selection, changes, or other related information.

Please use the RaceQ's app, on your phone/tablet if possible. Set the start time in advance for 10:50am so you don't need to think about it. (Only one device per boat should run the app.)

Disclaimer: The included chart is for reference ONLY and not for navigational purposes.